

Solution Brief

Accedian Skylight and Endace

Deliver complete visibility into network and application performance and user experience

In today's "always-on" world, enterprises need to delight customers and ensure the productivity of internal staff and partners twenty-four hours a day, 365 days a year. Guaranteeing reliable, high-performance, end-to-end delivery of applications and services is critical to ensuring an optimal end-user experience.

To meet this challenge, IT teams need deep visibility into network activity and IT infrastructure performance, combined with a real-time view of how application and network performance are affecting end-user experience.

To troubleshoot performance problems effectively, IT teams need to identify the root cause of an issue quickly – is it an application-level issue, or a problem with the network or other IT infrastructure – so it can be resolved before users are adversely impacted.

Joint solution benefits

Combining Skylight™ network and application performance monitoring with the network history that EndaceProbes record gives DevOps and NetOps teams access to detailed network forensics evidence they need to identify the root cause of network and application issues with certainty.

With the ability to seamlessly drill down into every aspect of the network and application chain, teams no longer have to guess about the root cause of issues or their impact on users.

Products

Accedian Skylight
EndaceProbe analytics platform & EndaceVision

Benefits

- Powerful, service-level monitoring and alerting
- Quickly identify service-affecting issues and quantify the impact on users and applications
- Troubleshoot and resolve issues faster with complete visibility into network and application performance and user experience
- Detailed historical data for capacity planning and performance optimization
- Transaction-level visibility into application performance and user experience

Accedian Skylight benefits

Skylight is a network and application performance management (NAPM) solution that combines advanced end-user experience monitoring, network performance monitoring and real-time application transaction insight.

NAPM enables enterprises to deliver a powerful solution for monitoring and assuring the end user experience of applications running across the network.

- Skylight delivers unified performance monitoring visibility across the entire data center and cloud infrastructure using light-weight virtual software sensors that capture 100% of application transaction interactions
- Highly scalable, simple to setup and easy to use, Skylight provides real-time, actionable insight into every platform, link, application and user; even across complex deployments
- Powerful analytics return proven business value, unifying teams to deliver high-quality user experience

Endace solution benefits

The EndaceProbe™ network analytics platform captures, indexes and stores network traffic with 100% accuracy while simultaneously hosting a wide variety of network security and performance monitoring applications in Application Dock™, the EndaceProbe's built-in hosting environment.

The Pivot-To Vision™ function of the EndaceProbe API lets NetOps and DevOps analysts pivot from alerts or issues detected by Skylight directly to EndaceVision™, the EndaceProbe's built-in investigation tool, to analyze the related, packet-level network history.

Using the IP address and trigger event time range, Pivot-To-Vision focuses the analyst directly on pre-filtered incident data. EndaceVision lets analysts dissect, review and extract the relevant traffic from the terabytes of network history recorded on the network. It provides analysis to microsecond level with views filtered by application, IP, protocol, top talkers and many other parameters, enabling rapid insights and accurate conclusions.

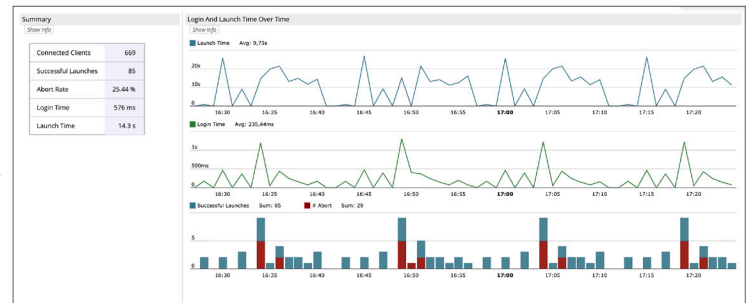
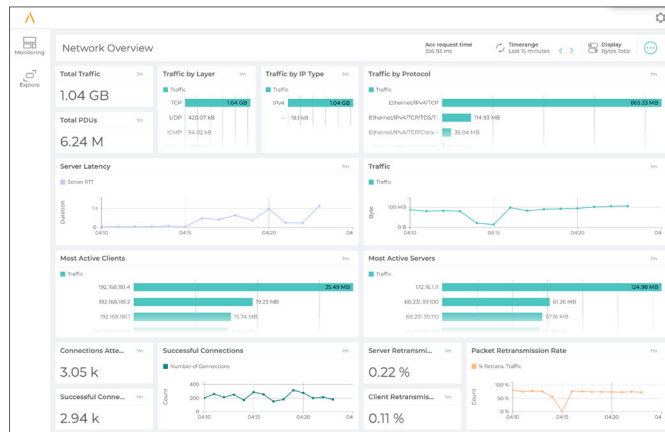
Conclusion

Being able to get directly to relevant network traffic with a single click accelerates issue triage and investigation, allowing NetOps and SecOps teams to respond to critical incidents quickly and minimize the impact on service availability and user experience.

The combined power of Accedian Skylight and the EndaceProbe analytics platform gives NetOps and DevOps teams unparalleled visibility into network and application performance and user experience.

They provide the ability to quickly identify where a problem lies and the forensic evidence to see precisely what caused it. This gives organizations the visibility necessary to ensure the reliability and performance of critical services and deliver the quality of experience required to ensure happy users and productive staff.

How it works



SQL Query	Queries	Errors	% Errors	DB	DB DTT	DB DTT	Query Payload	Response Payload	# Query PDU	# Response PDU
select @@max_precision	7.8k	0	0.00 %	9 ms	1 ms	282 µs	343.8 KB	202.1 KB	7.8k	7.8k
insert into test_fetch(value) values(1)	1.8k	0	0.00 %	671 µs	0 µs	0 µs	174.7 KB	76.6 KB	1.8k	1.8k
commit transaction	1.6k	0	0.00 %	17 µs	0 µs	0 µs	90.9 KB	42.9 KB	1.6k	1.6k
select get_filestream_transaction_context()	1.6k	0	0.00 %	16 ms	0 µs	0 µs	160.3 KB	70.6 KB	1.6k	1.6k
begin transaction	1.6k	0	0.00 %	8 ms	0 µs	0 µs	87.8 KB	42.3 KB	1.6k	1.6k
set xact_abort on	1.4k	0	0.00 %	6 ms	0 µs	0 µs	79.2 KB	18.4 KB	1.4k	1.4k
sp_reset_connection	1.2k	0	0.00 %	6 ms	0 µs	0 µs	74.1 KB	20.8 KB	1.2k	1.2k
[sp_configure] sp_configure_param_rowset 'sp_configure_tools', 1, NULL, NULL	850	0	0.00 %	20 ms	0 µs	0 µs	526.6 KB	1.1 MB	850	850
sp_configure_tools @, NULL, NULL	822	0	0.00 %	8 ms	0 µs	0 µs	43.6 KB	146.7 KB	822	822
sp_executesql N'select top (1) (extent).[filetype] as [filetype],...	816	0	0.00 %	7 ms	0 µs	0 µs	490.4 KB	146.3 KB	816	816
dbo.asnet_usershows_getrolesforuser @ApplicationName=N'', @UserName=...	791	0	0.00 %	10 ms	0 µs	0 µs	156.6 KB	387.9 KB	791	791
[ADSI] sp_configure_param_rowset 'sp_configure_authentication',...	791	0	0.00 %	16 ms	0 µs	0 µs	146.6 KB	91.7 KB	791	791
sp_executesql N'select top (1) (extent).[documenttypepropertyid] as [D...	717	0	0.00 %	7 ms	0 µs	0 µs	524.1 KB	155.4 KB	717	717
sp_executesql N'select top (1) (extent).[documenttypepropertyid] as [D...	717	0	0.00 %	6 ms	0 µs	0 µs	526.3 KB	157.7 KB	717	717
sp_executesql N'select top (1) (extent).[documenttypepropertyid] as [D...	717	0	0.00 %	6 ms	0 µs	0 µs	519.8 KB	151.1 KB	717	717
sp_configure_tools N'select * from UT where (verror is null or verro...	660	0	0.00 %	211 ms	0 µs	0 µs	223.1 KB	778.5 KB	660	660
sp_configure_tools N'select * from UT where (verror is null or verro...	657	0	0.00 %	220 ms	0 µs	0 µs	223.1 KB	771.4 KB	657	657
sp_configure_tools N'select * from UT where (verror is null or verro...	656	0	0.00 %	220 ms	0 µs	0 µs	221.7 KB	771.4 KB	656	656
sp_configure_tools N'select * from UT where (verror is null or verro...	656	0	0.00 %	220 ms	0 µs	0 µs	221.7 KB	771.4 KB	656	656
select (extent).[documenttypepropertyid] as [documenttypepropertyid], [...	627	0	0.00 %	7 ms	0 µs	0 µs	523.5 KB	368.2 KB	627	627

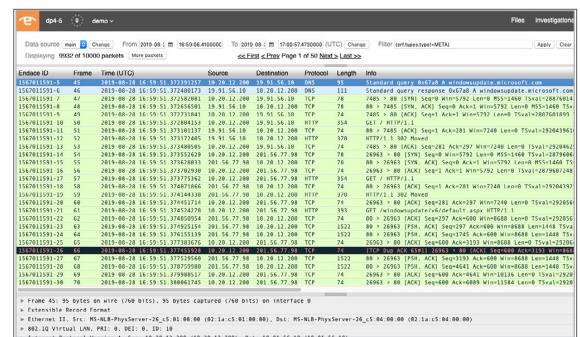
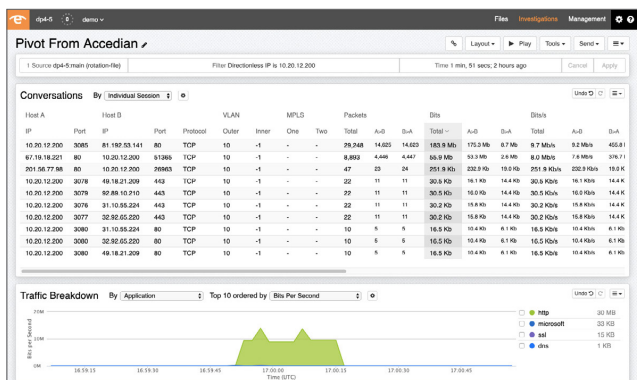


Figure 1: Workflow of the joint Accedian Skylight and Endace solution

Endace™, the Endace logo, Provenance™ and DAG™ are registered trademarks in New Zealand and/or other countries of Endace Technology Limited. Other trademarks used may be the property of their respective holders. Use of the Endace products described in this document is subject to the Endace Terms of Trade and the Endace End User License Agreement (EULA).

About Accedian

Accedian is the leader in performance analytics and end user experience solutions, dedicated to providing our customers with the ability to assure their digital infrastructure, while helping them to unlock the full productivity of their users.

Learn more at accedian.com

Accedian | 2351 Blvd. Alfred Nobel, N-410 | Saint-Laurent, QC H4S 2A9 | 1 866-685-8181 | accedian.com

© 2019 Accedian Networks Inc. All rights reserved. Accedian, the Accedian logo and Skylight are trademarks or registered trademarks of Accedian Networks Inc. To view a list of Accedian trademarks visit: accedian.com/legal/trademarks